



FORGED STEEL GATE VALVES
CLASS 800 (150 ~ 800)

FIG.45A Series

Bill of Materials & Parts

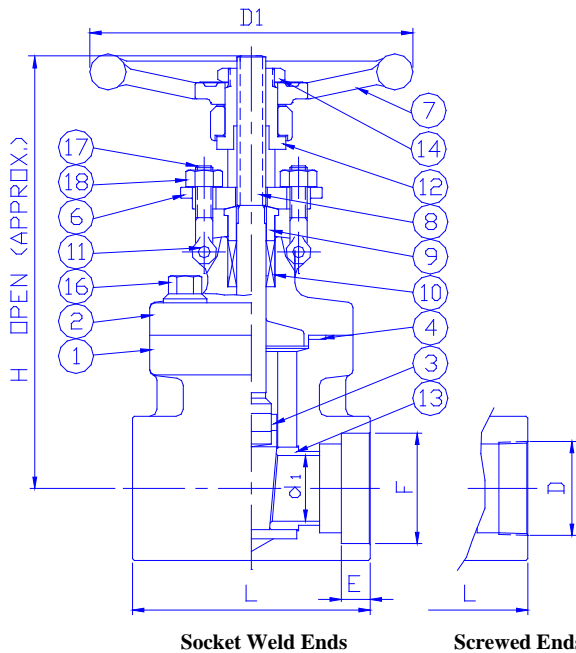
Part No.	Part Name	QTY	ASTM Specifications (Specs.-Grades/Types)							
			A105	A350	A182					
				LF2	F11	F22	F304	F304L	F316	F316L
1	BODY	1	A105	A350-LF2	A182-F11	A182-F22	A182-F304	A182-F304L	A182-F316	A182-F316L
2	BONNET (BUSH) *	1	A105	A350-LF2	A182-F11	A182-F22	A182-F304	A182-F304L	A182-F316	A182-F316L
3	WEDGE *	1	A276-420				A276-304	A276-304L	A276-316	A276-316L
4	GASKET	1	GRAFOIL + 304 SPIRAL WOUND							
6	GLAND FLANGE	1	A181 / A216-WCB				A351-CF8 / A182-F304			
7	HAND WHEEL	1	A536 (65-45-12)							
8	STEM	1	A276-410				A276-304	A276-304L	A276-316	A276-316L
9	GLAND	1	A276-410				A276-304			
10	GLAND PACKING	A/R	GRAFOIL + CARBON FIBER							
11	EYE BOLT PIN	2	A580-410T				A580-304A			
12	YOKE SLEEVE	1	A276-410 + Nitrided							
13	SEAT RING *	1	A276-410				A276-304	A276-304L	A276-316	A276-316L
14	HAND WHEEL NUT	1	A181 / A536							
16	BONNET BOLT	A/R	A193-B7				A193-B8			
17	EYE BOLT	2	A193-B8							
18	EYE BOLT NUT	2	A194-2H				A194-8			

NOTE : (1)*Stellite Hard Faced.

(2)Other Materials Also Available on Requested.

(3)KING GATE Reserves The Right To Change Designs ,
Materials or Specifications Without Notice.

(4)STL #6 = Stellite (AWS A5.13 ER CoCr-A)



DESIGN DESCRIPTION

- Bolted Bonnet
- Outside Screw and Yoke
- Wedge Disc
- Rising Stem and Non-Rising Handwheel
- Renewable Seat Ring

STANDARD

- Steel Gate Valves : API 602
- Steel Valves : ASME B16.34
- End to End : ETERNAL's Standard
- Screwed Ends : ASME B1.20.1
- Socket Weld Ends : ASME B16.11
- Pressure Test : API 598 (API 602), ISO-5208
- ASME B16.34

CLASS 800								
SIZE	d1	D	F	E	L	D1	H [OPEN]	Wts-kg [APPROX.]
1/2"	12.70	1/2 NPT	21.700	9.600	79.000	102.00	160	2.3
3/4"	12.70	3/4 NPT	27.100	12.700	92.000	102.00	160	2.4
1"	17.53	1 NPT	33.900	12.700	111.000	121.00	190	3.7
1-1/4"	28.70	1-1/4 NPT	42.600	12.700	120.000	146.00	252	7.2
1-1/2"	28.70	1-1/2 NPT	48.700	12.700	120.000	146.00	252	7.4
2"	38.10	2 NPT	61.100	15.900	140.000	178.00	280	10.3