

FORGED STEEL CHECK VALVES
CLASS 800 (150 ~ 800)

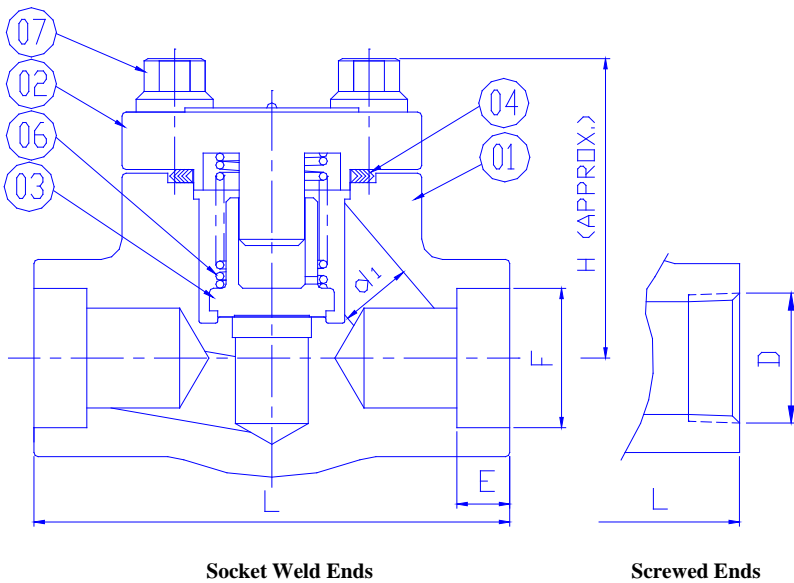
FIG.63A Series



Bill of Materials & Parts

Part No.	Part Name	QTY	ASTM Specifications(Specs.-Grades/Types)							
			A105	A350	A182					
				LF2	F11	F22	F304	F304L	F316	F316L
1	BODY (SEAT) *	1	A105	A350-LF2	A182-F11	A182-F22	A182-F304	A182-F304L	A182-F316	A182-F316L
2	BONNET	1	A105	A350-LF2	A182-F11	A182-F22	A182-F304	A182-F304L	A182-F316	A182-F316L
3	DISC *	1	A276-420				A276-304	A276-304L	A276-316	A276-316L
4	GASKET	1	GRAFOIL + 304 SPIRAL WOUND							
6	SPRING	1	STAINLESS STEEL							
7	BONNET BOLT	1	A193-B7				A193-B8			

NOTE : (1) *Stellite Hard Faced. (2) Other Materials Also Available on Requested. (3)KING GATE Reserves The Right To Change Designs , Materials or Specifications Without Notice.



DESIGN DESCRIPTION

Bolted Cover
Horizontal Piston Type
Integral Seat

STANDARD

Steel Valves : ASME B16.34; API-602
End to End : ETERNAL's Standard
Screwed Ends : ASME B1.20.1
Socket Weld Ends : ASME B16.11
Pressure Test : API 598 (API 602),ISO-5208
ASME B16.34

Unit : mm

CLASS 800								
SIZE	d1	D	F	E	L	H [OPEN]	Wts-kg [APPROX.]	
1/2"	9.5	1/2 NPT	21.7	9.6	79.0	49.0	1.6	
3/4"	13.0	3/4 NPT	27.1	12.7	92.0	54.0	1.7	
1"	17.5	1 NPT	33.9	12.7	111.0	73.0	2.5	
1-1/4"	30.0	1-1/4 NPT	42.6	12.7	152.0	101.0	5.5	
1-1/2"	30.0	1-1/2 NPT	1.9	12.7	152.0	101.0	5.7	
2"	38.1	2 NPT	61.1	15.9	172.0	120.5	8.6	