



FORGED STEEL CHECK VALVES
CLASS 1500、2500

FIG.53A Series

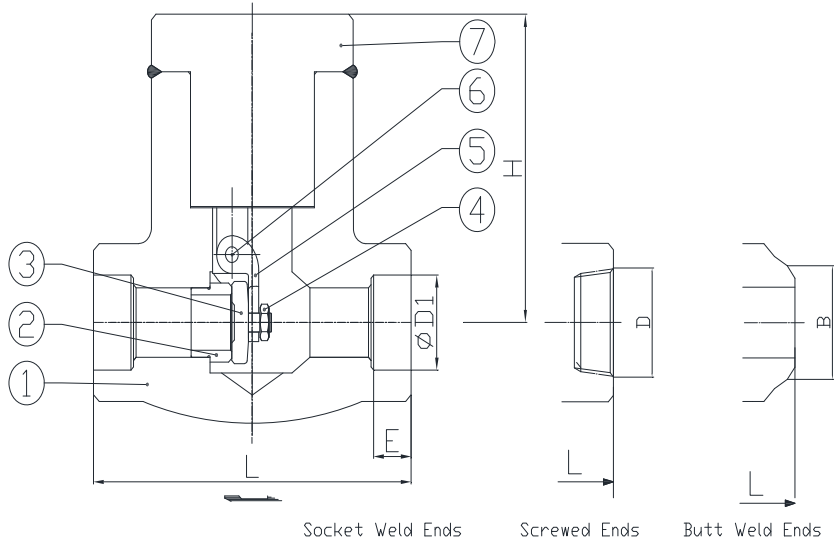
Bill of Materials & Parts

| Part No. | Part Name | QTY | ASTM Specifications (Specs.-Grades/Types) | | | | | | | | | | | |
|----------|-----------|-----|---|---------------|---------------|---------------|--------------|--------------|----------------|-----------------|----------------|-----------------|-----------|--|
| | | | A105 | A350 | A182 | | | | | | | | | |
| | | | | LF2 | F11 | F22 | F5 | F9 | F304 | F304L | F316 | F316L | | |
| 1 | BODY | 1 | A105 | A350-LF2 | A182-F11 | A182-F22 | A182-F5 | A182-F9 | A182-F304 | A182-F304L | A182-F316 | A182-F316L | | |
| 2 | SEAT * | 1 | A105+STLT | A350-LF2+STLT | A182-F11+STLT | A182-F22+STLT | A182-F5+STLT | A182-F9+STLT | A182-F304+STLT | A182-F304L+STLT | A182-F316+STLT | A182-F316L+STLT | | |
| 3 | DISC * | 1 | A276-304 | | | | | | | | | A276-316 | A276-316L | |
| 4 | NUT | 1 | A194-2H | | | | | | A194-B8 | | | | | |
| 5 | ARM HIGE | 1 | A276-304 | | | | | | | | | A276-316 | A276-316L | |
| 6 | HINGE PIN | 1 | A105 | | | | | | A276-304 | | | | | |
| 7 | COVER | 1 | A105 | A350-LF2 | A182-F11 | A182-F22 | A182-F5 | A182-F9 | A182-F304 | A182-F304L | A182-F316 | A182-F316L | | |
| | | | | | | | | | | | | | | |
| | | | | | | | | | | | | | | |
| | | | | | | | | | | | | | | |
| | | | | | | | | | | | | | | |
| | | | | | | | | | | | | | | |
| | | | | | | | | | | | | | | |

NOTE : (1) *Stellite Hard Faced.

(2) Other Materials Also Available on Requested.

(3) KING GATE Reserves The Right To Change Designs ,
 Materials or Specifications Without Notice.



DESIGN DESCRIPTION

- Seal Welded Cover
- Horizontal Piston Type
- Integral Seat
- Screwed Ends 、Socket Weld Ends or Butt Weld Ends

STANDARD

- Steel Valves : ASME B16.34 ; API-602
- End to End : KING GATE's Standard
- Screwed Ends : ASME B1.20.1
- Socket Weld Ends : ASME B16.11
- Butt Weld Ends : ASME B36.10M
- Pressure Test : ASME B16.34 ; API 598
- ISO-5208

SIZE[inch] 1/2" ~ 2"

UNIT:mm

| CLASS 1500 | | | | | | | | CLASS 2500 | | | | | | | |
|------------|------|-------|-------|------|------|-------|------|------------|------|-------|-------|------|------|-------|------|
| SIZE | d | L | H | E | F | D | B | SIZE | d | L | H | E | F | D | B |
| 1/2" | 8.0 | 140.0 | 125.0 | 9.5 | 21.8 | 11.84 | 21.3 | 1/2" | 8.0 | 186.0 | 141.0 | 9.5 | 21.8 | 11.84 | 21.3 |
| 3/4" | 9.0 | 140.0 | 125.0 | 12.5 | 27.2 | 15.6 | 26.7 | 3/4" | 9.0 | 186.0 | 141.0 | 12.5 | 27.2 | 15.6 | 26.7 |
| 1" | 14.0 | 140.0 | 125.0 | 12.5 | 33.9 | 20.7 | 33.4 | 1" | 14.0 | 186.0 | 141.0 | 12.5 | 33.9 | 20.7 | 33.4 |
| 1-1/2" | 25.0 | 178.0 | 163.0 | 12.5 | 48.8 | 34.0 | 48.3 | 1-1/2" | 25.0 | 232.0 | 185.0 | 12.5 | 48.8 | 34.0 | 48.3 |
| 2" | 27.0 | 216.0 | 185.0 | 16.0 | 61.2 | 42.9 | 60.3 | 2" | 27.0 | 279.0 | 230.0 | 16.0 | 61.2 | 42.9 | 60.3 |