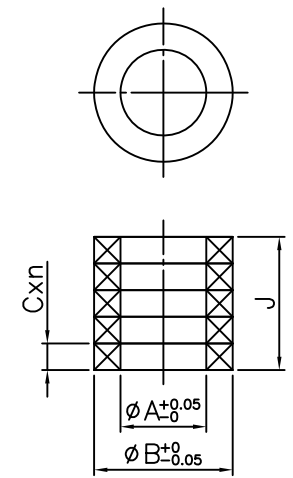
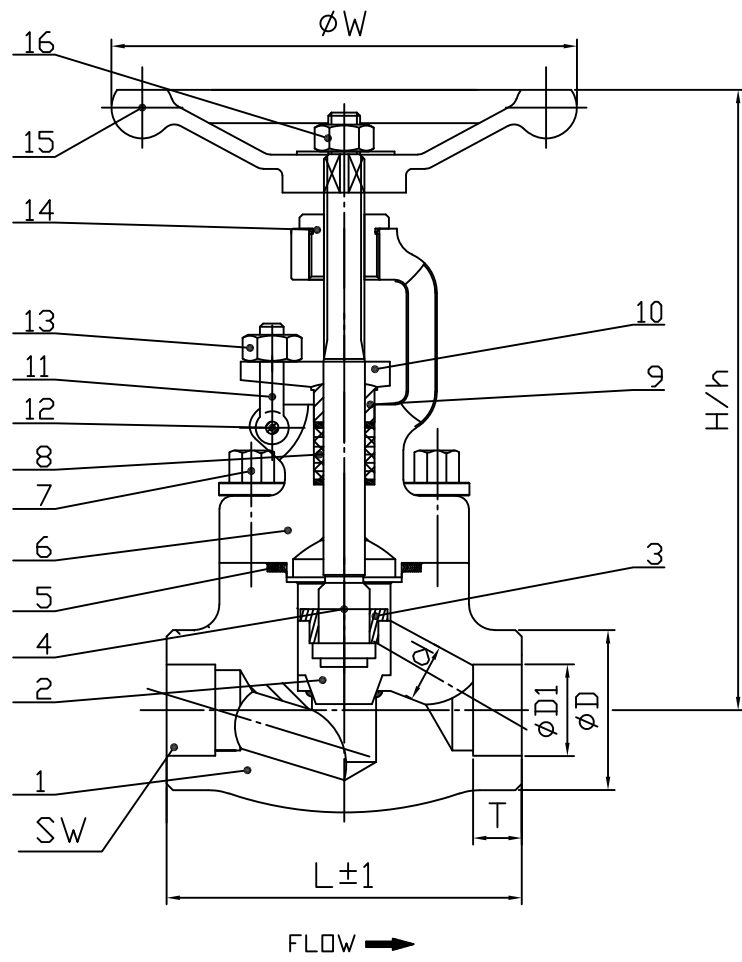


8		7		6		5		DRG NO. 81310050000XX		0		2		1	
CLIENTS LIST NO.		TEST PRESSURE		SHELL HYDROSTATIC 2975 psig AIR 80 psig API 602 CLASS 800		SEAT 2175 psig 80 psig		STANDARD		FACE TO FACE (END TO END) DIMENSIONS OF ENDS WALL THICKNESS		KGMC STD ASME B16.11 API 602 CLASS 800		REVISIONS	
TAG NO.: V16M												ZONE LTR		DESCRIPTION DATE APPROVED	



DETAIL OF PACKING
 ☒ - GRAPHITE

18			
17			
16	HANDWHEEL NUT	ASTM A194-2H	
15	HANDWHEEL	ASTM A536(65-45-12)	
14	STEM NUT	ASTM A276-410+NITRIZED	
13	EYE BOLT NUT	ASTM A194-8M	
12	EYE BOLT PIN	ASTM A580-410T	
11	EYE BOLT	ASTM A193-B8M	
10	GLAND FLANGE	ASTM A181	
9	GLAND	ASTM A276-410	
8	GLAND PACKING	GRAPHITE	
7	BONNET BOLT	ASTM A193-B7	
6	BONNET	ASTM A105	
5	GASKET	SPW 304SS+GRAPHITE	
4	STEM	ASTM A276-410	
3	DISC NUT	ASTM A276-410	
2	DISC	ASTM A276-410	
1	BODY(SEAT)	ASTM A105+H/F STL#6	



DIMENSIONS											STEM		PACKING					WT.(kg) APPROX.
ITEM NO	QTY	SIZE	φd	L	φW	H	h	T	φD1	φD	OD	φA	φB	J	Cxn			
		1/2"	10	79	100	165	156	9.5	21.8	36	11.5	11.5	17.5	24	6x4	2.3		
		3/4"	13	92	100	167	158	12.5	27.2	40	11.5	11.5	17.5	24	6x4	2.5		
		1"	17.5	111	125	204	190	12.5	33.9	50	13	13	20	24	6x4	4.3		
		1-1/2"	28	152	160	231	214	12.5	48.7	67	16	16	26	30	6x5	7		
		2"	35	172	180	267	247	16	61.2	77	20	20	30	28	7x4	10.3		

FIND NO./QTY REQ		NOMENCLATURE OR DESCRIPTION		MATERIAL AND SPECIFICATION	
LIST OF MATERIALS					
FIG --33A1XXSW000					
金口金屬股份有限公司					
DRAWNBY 吳賜相 106.10.13		TITLE 800# 1/2"~2" FORGED STEEL			
CHECKEDBY		GLOBE VALVE O.S.&Y. B.B.			
CHIF. 王聰烈 106.10.13		R.S. S.W. ENDS			
MANG. 賴金輝 106.10.13		SCALE NON			
APPROVED 許進春 106.10.13		DRG NO. 81310050000XX		Rev.0	