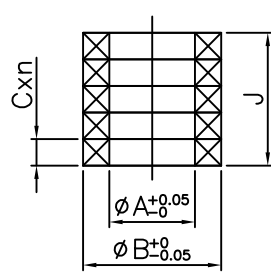
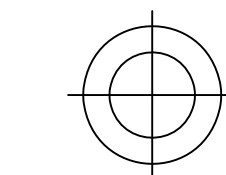
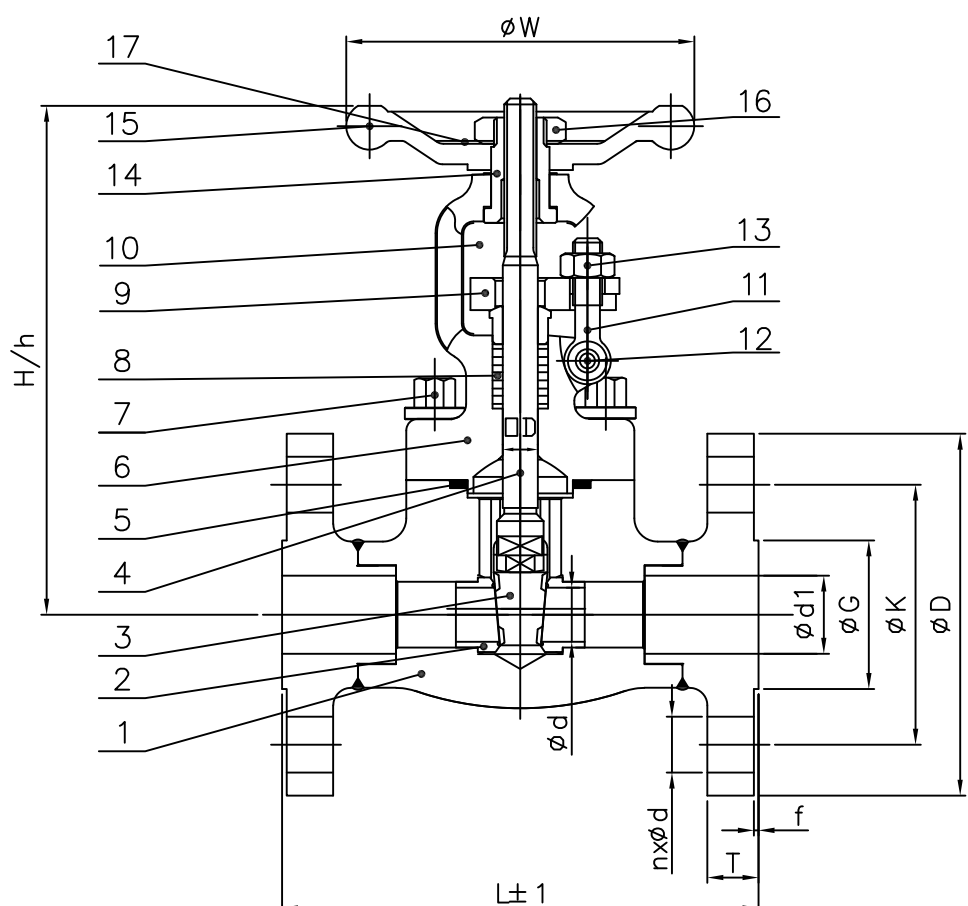


8 CLIENTS LIST NO.		7 TEST PRESSURE		6 SHELL 450 psig SEAT 315 psig		5 STANDARD		DRG NO. 81420035000XX 0		2 REVISIONS		1	
TAG NO.:		HYDROSTATIC AIR API 598		SEAT 80 psig				FACE TO FACE (END TO END) ASME B16.10		ZONE LTR		DESCRIPTION DATE APPROVED	
								DIMENSIONS OF ENDS ASME B16.5					
								WALL THICKNESS API 602 CLASS 800					





 SIZE-150

 MARK


UNIT : mm

CLASS 150 DIMENSIONS

ITEM NO	QTY	SIZE	CLASS 150 DIMENSIONS								STEM		PACKING						
			ϕd	L	ϕW	H	h	T	f	$\phi d1$	ϕG	ϕK	ϕD	$n \times \phi d$	ϕD	ϕA	ϕB	J	Cxn
		1/2"	10.5	108	100	158.5	146	9.7	1.6	15	35	60.5	90	4* $\phi 16$	10	10	16	24	6x4
02	1	3/4"	13.5	117	100	163.5	148	10.5	1.6	20	43	70.0	100	4* $\phi 16$	10	10	16	24	6x4
		1"	18	127	125	196	176	11.2	1.6	25	51	79.3	110	4* $\phi 16$	12	12	19	24	6x4
		1-1/2"	29	165	160	233	202	14.3	1.6	40	73	98.6	127	4* $\phi 16$	16	16	26	30	6x5
		2"	36.5	178	180	267	228	15.8	1.6	50	92	120.6	152.4	4* $\phi 19$	17	17	27	30	6x5

ITEM NO	QTY REQ	NOMENCLATURE OR DESCRIPTION	MATERIAL AND SPECIFICATION
18		NAME PLATE	SS316
17		HANDWHEEL NUT	ASTM A194-2H
16		HANDWHEEL	ASTM A536
15		YOKESLEEVE	ASTM A276-410+NITRIZED
14		EYE BOLT NUT	ASTM A194-8
13		EYE BOLT PIN	ASTM A580-410T
12		EYE BOLT	ASTM A193-B8
11		GLAND FLANGE	ASTM A181
10		GLAND	ASTM A276-410
9		GLAND PACKING	GRAPHITE
8		BONNET BOLT	ASTM A193-B7
7		BONNET	ASTM A105
6		GASKET	SPW 304SS+GRAPHITE
5		STEM	ASTM A276-410
4		WEDGE	ASTM A276-410
3		SEAT RING	ASTM A276-410+H/F STL#6
2		BODY	ASTM A105

LIST OF MATERIALS

FIG	FN45A1XX--000			
 金口金屬股份有限公司				
DRAWN BY	吳賜柏	106.10.16	TITLE	150LB 1/2"~2" FORGED STEEL GATE VALVE O.S.&Y. B.B FLANGE ENDS
CHECKED BY				
CHIF.	汪聰烈	106.10.16		
MANG.	賴金輝	106.10.16		
APPROVED	許進香	106.10.16	SCALE	NON
			DRG NO.	81420035000XX Rev.0