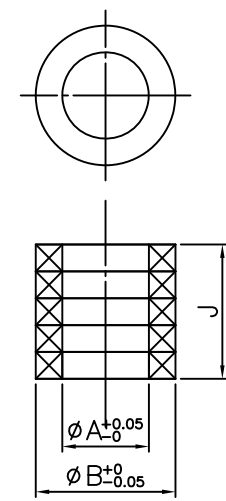
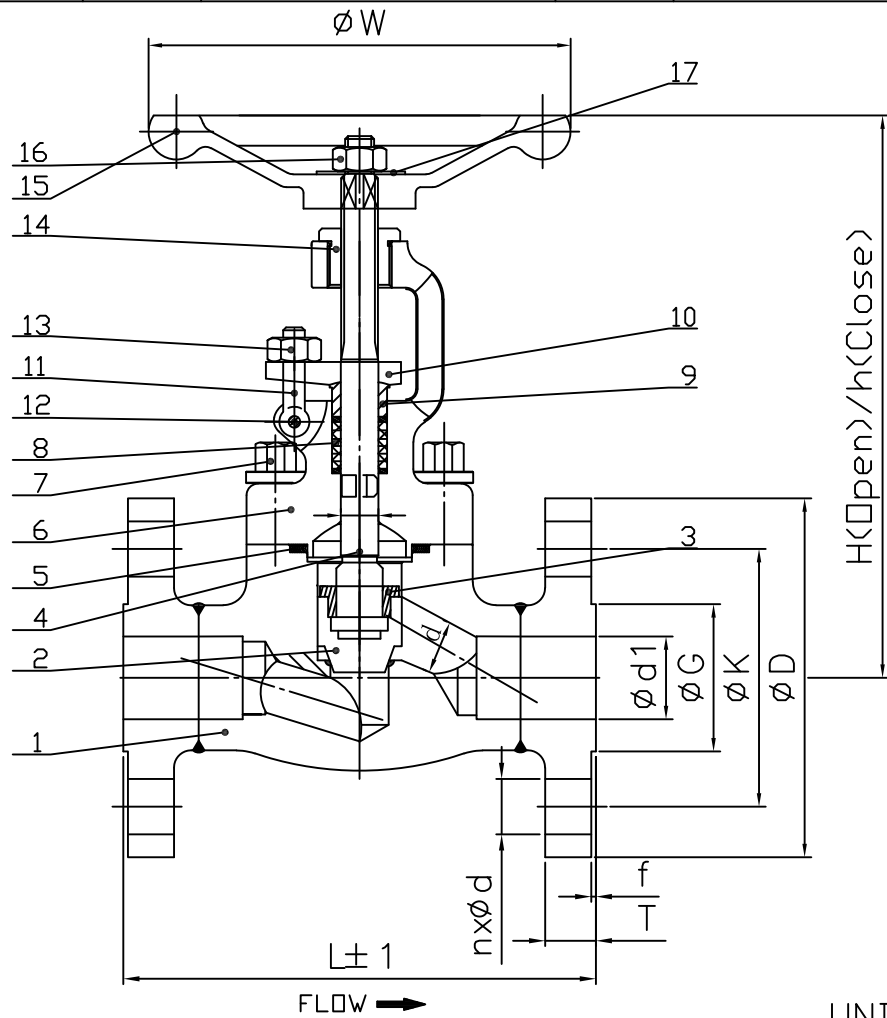


8 CLIENTS LIST NO.		7 TEST PRESSURE		6 SHELL 450 psig AIR 80 psig API 598 CLASS 150		5 STANDARD		DRG NO. 81320035000XX 0		2 REVISIONS		1	
TAG NO.:		HYDROSTATIC		SEAT 315 psig		FACE TO FACE (END TO END)		KGMC STD		ZONE LTR		DATE APPROVED	
		AIR		80 psig		DIMENSIONS OF ENDS		ASME B16.5		DESCRIPTION		DATE APPROVED	
		API 598 CLASS 150				WALL THICKNESS		API 602 CLASS 800					



DETAIL OF PACKING
 ☒ - GRAPHITE

18		
17	NAME PLATE	SS316
16	HANDWHEEL NUT	ASTM A194-2H
15	HANDWHEEL	ASTM A536
14	STEM NUT	ASTM A276-410+NITRIDED
13	EYE BOLT NUT	ASTM A194-8
12	EYE BOLT PIN	ASTM A580-410T
11	EYE BOLT	ASTM A193-B8
10	GLAND FLANGE	ASTM A181
9	GLAND	ASTM A276-410
8	GLAND PACKING	GRAPHITE
7	BONNET BOLT	ASTM A193-B7
6	BONNET	ASTM A105
5	GASKET	SPW 304SS+GRAPHITE
4	STEM	ASTM A276-410
3	DISC NUT	ASTM A276-410
2	DISC	ASTM A276-410+H/F STL #6
1	BODY/SEAT	ASTM A105/ASTM A276-410



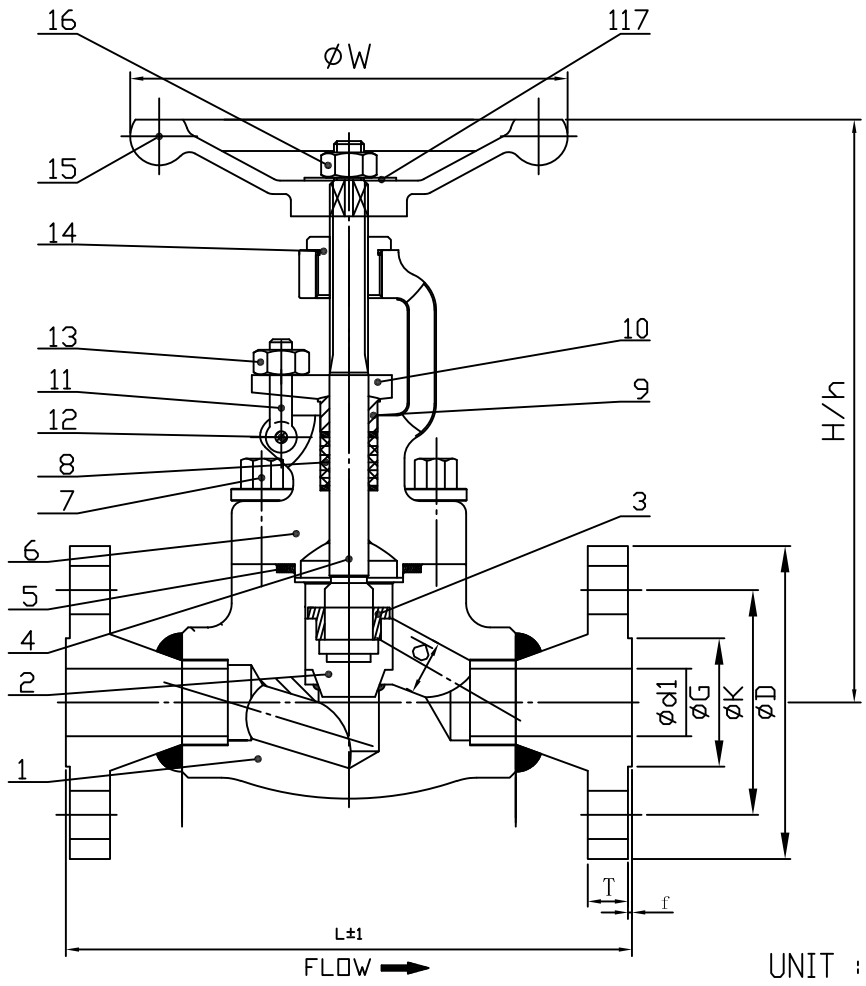
CLASS 150 DIMENSIONS

ITEM NO	QTY	SIZE	φd	L	φW	H	h	T	f	φd1	φG	φK	φD	n×φd	φD	φA	φB	J	C×n
		1/2"	10	153	100	165	156	9.7	1.6	15	35	60.5	90	4*φ16	11.5	11.5	17.5	24	6×4
		3/4"	13	178	100	167	158	10.5	1.6	20	43	70.0	100	4*φ16	11.5	11.5	17.5	24	6×4
		1"	17.5	203	125	204	190	11.2	1.6	25	51	79.3	110	4*φ16	13	13	20	24	6×4
		1-1/2"	28	228	160	231	214	14.3	1.6	40	73	98.6	127	4*φ16	16	16	26	30	6×5
		2"	36	203	180	267	247	15.9	1.6	50	92	120.6	152.4	4*φ19	20	20	30	28	6×5

FIND NO./QTY REQ	NOMENCLATURE OR DESCRIPTION	MATERIAL AND SPECIFICATION
LIST OF MATERIALS		
FIG	FN33A1XX--000	

DRAWNBY	吳賜柏 113,11,06	TITLE 150LB 1/2"~2" FORGED STEEL GLOBE VALVE O.S.&Y. B.B. R.S. RF FLANGE ENDS SCALE NON DRG NO. 81320035000XX Rev.0
CHECKEDBY		
CHIF.	王聰烈 113,11,06	
MANG.	賴金輝 113,11,06	
APPROVED	許進春 113,11,06	

8		7		6		5		DRG NO. 81350035000XX 0		2		1	
CLIENTS LIST NO.		TEST PRESSURE		SHELL 1125 psig		SEAT 815 psig		STANDARD		FACE TO FACE (END TO END) ASME B16.10		REVISIONS	
TAG NO.		AIR		80 psig		80 psig		DIMENSIONS OF ENDS ASME B16.5		ZONE LTR		DESCRIPTION	
		API 598CLASS 300						WALL THICKNESS API 602 CLASS 800				DATE	
												APPROVED	





 SIZE-300

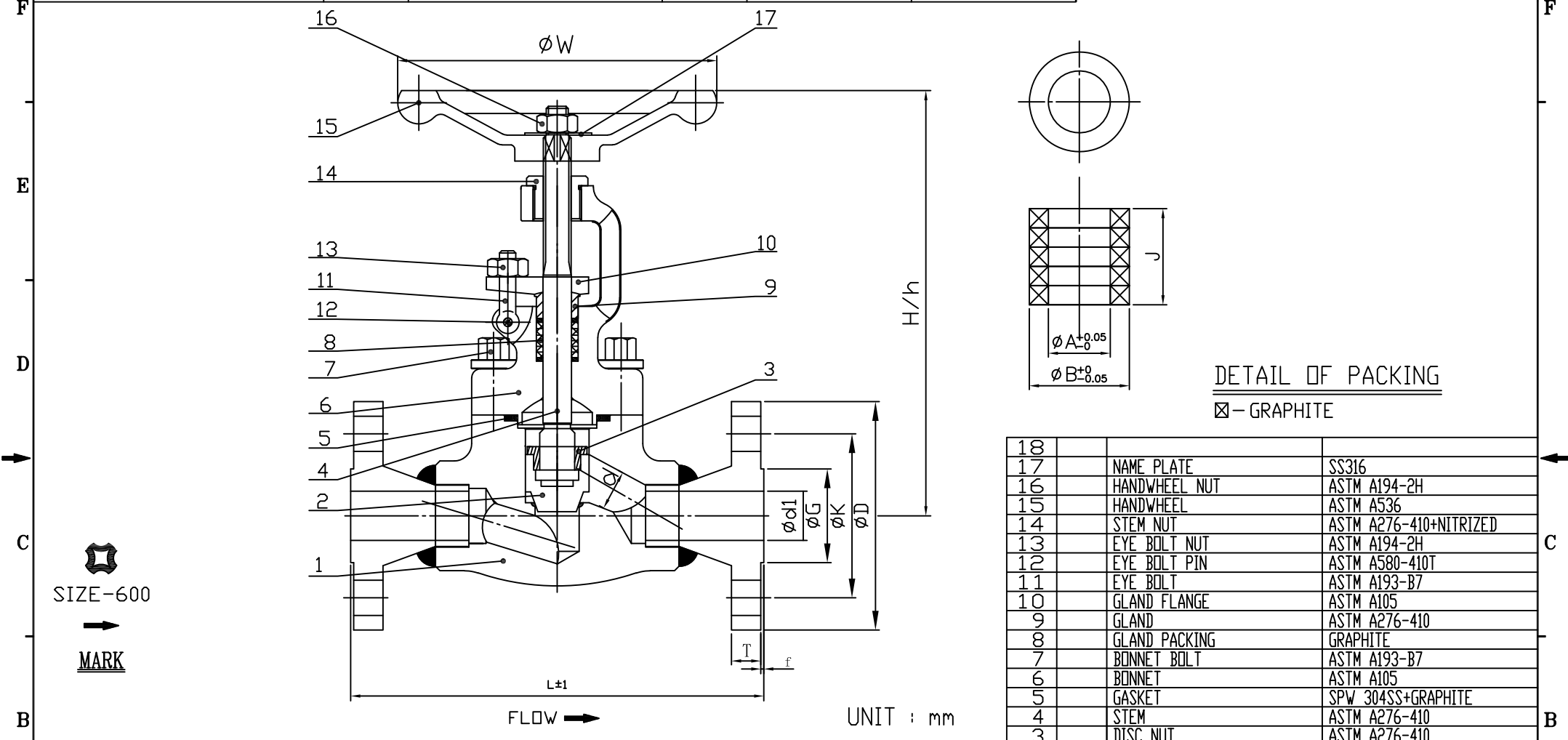
 MARK

18			
17	NAME PLATE		SS316
16	HANDWHEEL NUT		ASTM A194-2H
15	HANDWHEEL		ASTM A536
14	STEM NUT		
13	EYE BOLT NUT		
12	EYE BOLT PIN		
11	EYE BOLT		
10	GLAND FLANGE		
9	GLAND		
8	GLAND PACKING		GRAPHITE
7	BONNET BOLT		ASTM A93-B7
6	BONNET		ASTM A105
5	GASKET		SPW SS304+GRAPHITE
4	STEM		ASTM A276-410
3	DISC NUT		ASTM A276-410
2	DISC		ASTM A276-410+H/F STL#6
1	BODY/SEAT		ASTM A105/ASTM A276-410
FIND NO.	QTY REQ	NOMENCLATURE OR DESCRIPTION	MATERIAL AND SPECIFICATION

CLASS 300 DIMENSIONS										STEM		PACKING							
ITEM NO	QTY	SIZE	φd	L	φW	H	h	T	f	φd1	φG	φK	φD	nxφd1	φD	φA	φB	J	Cxn
		1/2"	10	152	100	165	156	14.3	1.6	15	35	66.5	95	4xφ16	11.5	11.5	17.5	24	6x4
		3/4"	13	178	100	167	158	15.8	1.6	20	43	82.6	117	4xφ19	11.5	11.5	17.5	24	6x4
		1"	17.5	203	125	204	190	17.6	1.6	25	51	89.0	125	4xφ19	13	13	20	24	6x4
		1-1/2"	28	229	160	231	214	20.7	1.6	40	73	114.3	155	4xφ22	16	16	26	30	6x5
		2"	36	267	180	267	247	22.4	1.6	50	92	127	165	8xφ19	20	20	30	28	7x4

LIST OF MATERIALS		FIG FL33A1XX--000	
 KING GATE METAL CORP.			
DRAWNBY	吳賜相 113,11,06	TITLE	300LB 1/2"~2" FORGED ALLOY STEEL GLOBE VALVE O.S.&Y. BB. FLANGE ENDS
CHECKEDBY			
CHIF.	王聰烈 113,11,06		
MANG.	賴金輝 113,11,06		
APPROVED	許進春 113,11,06	SCALE NON	DRG NO. 81350035000XX Rev.0

8		7		6		5		DRG NO. 81360035000XX		0		2		1					
CLIENTS LIST NO.		TEST PRESSURE		SHELL 2175 psig		SEAT 1585 psig		STANDARD		FACE TO FACE (END TO END) ASME B16.10		REVISIONS							
TAG NO.:		AIR psig		API 598 CLASS 600		80 psig				DIMENSIONS OF ENDS ASME B16.5		ZONE LTR		DESCRIPTION		DATE		APPROVED	
										WALL THICKNESS									
										API 602 CLASS 800									

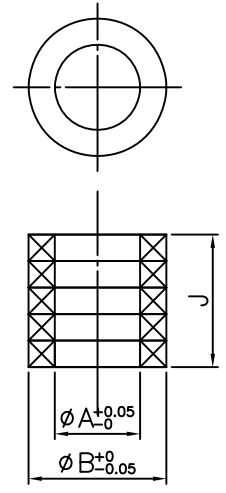
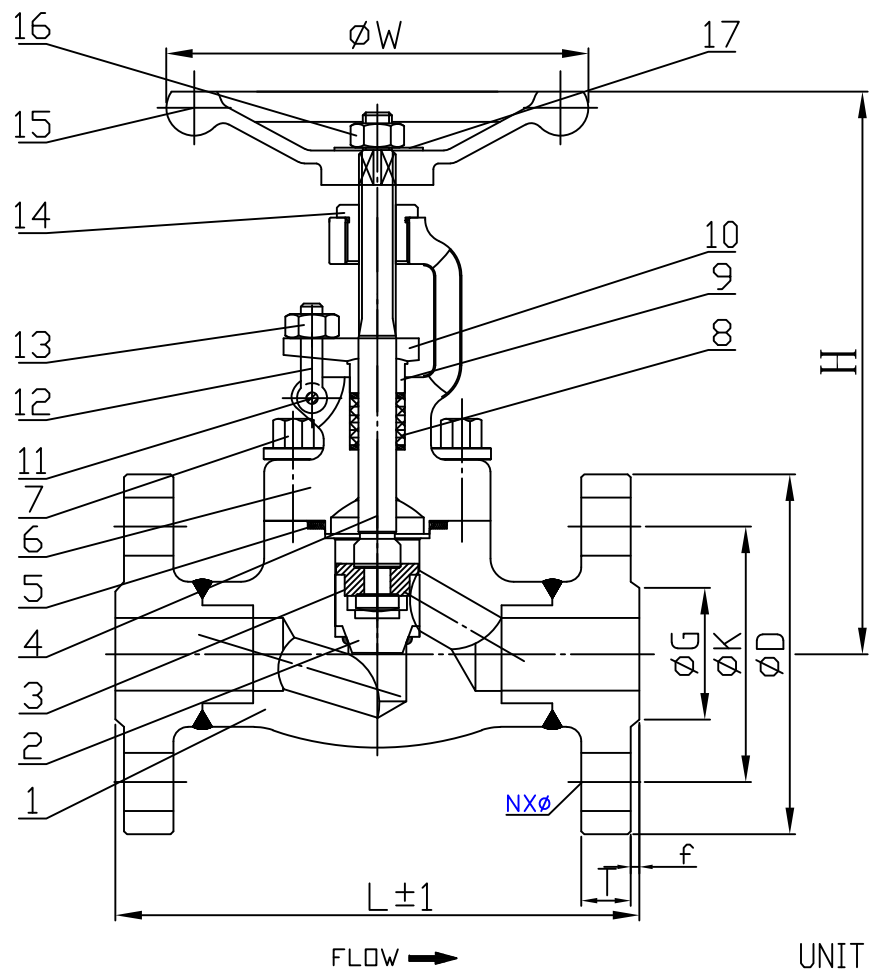


18			
17	NAME PLATE	SS316	
16	HANDWHEEL NUT	ASTM A194-2H	
15	HANDWHEEL	ASTM A536	
14	STEM NUT	ASTM A276-410+NITRIZED	
13	EYE BOLT NUT	ASTM A194-2H	
12	EYE BOLT PIN	ASTM A580-410T	
11	EYE BOLT	ASTM A193-B7	
10	GLAND FLANGE	ASTM A105	
9	GLAND	ASTM A276-410	
8	GLAND PACKING	GRAPHITE	
7	BONNET BOLT	ASTM A193-B7	
6	BONNET	ASTM A105	
5	GASKET	SPW 304SS+GRAPHITE	
4	STEM	ASTM A276-410	
3	DISC NUT	ASTM A276-410	
2	DISC	ASTM A276-410+H/F STL#6	
1	BODY/SEAT	ASTM A105	

CLASS 600 DIMENSIONS													STEM		PACKING				
ITEM NO	QTY	SIZE	ød	L	øW	H	h	T	f	ød1	øG	øK	øD	nxød1	øD	øA	øB	J	Cxn
		1/2"	10	165	100	165	156	14.5	6.5	15	35	66.5	95	4xø16	11.5	11.5	17.5	24	6x4
		3/4"	13	190	100	167	158	16	6.5	20	43	82.6	115	4xø19	11.5	11.5	17.5	24	6x4
		1"	17.5	216	125	204	190	17.6	6.5	25	51	89.0	125	4xø19	13	13	20	24	6x4
		1-1/2"	28	241	160	231	214	22.5	6.5	40	73	114.3	155	4xø22	16	16	26	30	6x5
		2"	36	292	180	267	247	25.5	6.5	50	92	127	165	8xø19	20	20	30	28	7x4

FIND NO.	QTY REQ	NOMENCLATURE OR DESCRIPTION	MATERIAL AND SPECIFICATION
LIST OF MATERIALS			
FIG	FI33A1XX--000		
KING GATE METAL CORP.			
DRAWN BY	吳賜相	113,11,06	TITLE
CHECKED BY			600LB 1/2"~2" FORGED STEEL GLOBE VALVE O.S.&Y. B.B FLANGE ENDS
CH.F.	王聰烈	113,11,06	
MAN.G.	賴金輝	113,11,06	
APPROVED	許進春	113,11,06	SCALE NON
		DRG NO.	81360035000XX
		Rev.	0

8		7		6		5		DRG NO.		0		2		1							
CLIENTS LIST NO.				TEST PRESSURE		SHELL		SEAT		FACE TO FACE (END TO END)		REVISIONS									
				HYDROSTATIC		3250 psig		2380 psig		ASME B16.10		ZONE		LTR		DESCRIPTION		DATE		APPROVED	
TAG NO.:				AIR		psig		80 psig		ASME B16.5											
				API 598 CLASS 900						API 602											



DETAIL OF PACKING

⊠ - GRAPHITE

18			
17	NAME PLATE		SS316
16	HANDWHEEL NUT		ASTM A194-2H
15	HANDWHEEL		ASTM A536
14	STEM NUT		ASTM A276-410+NITRIDED
13	EYE BOLT NUT		ASTM A194-2H
12	EYE BOLT PIN		ASTM A580-410T
11	EYE BOLT		ASTM A193-B7
10	GLAND FLANGE		ASTM A105
9	GLAND		ASTM A276-410
8	GLAND PACKING		GRAPHITE
7	BONNET BOLT		ASTM A193-B7
6	BONNET		ASTM A105
5	GASKET		SPW 304SS+GRAPHITE
4	STEM		ASTM A276-410
3	DISC NUT		ASTM A276-410
2	DISC		ASTM A276-410+H/F STL#6
1	BODY/SEAT		ASTM A105



FLOW → UNIT : mm

CLASS 900 DIMENSIONS

ITEM NO	QTY	SIZE	Ød	L	ØW	H	T	f	ØG	ØK	ØD	nxØd1	STEM		PACKING		
													□D	ØA	ØB	J	Cxn
		1/2"	10	216	125	207	22.4	7	35	82.6	120	4xØ16	11.5	11.5	17.5	24	6x4
		3/4"	13	229	125	207	25.4	7	43	89.0	130	4xØ19	11.5	11.5	17.5	24	6x4
		1"	17.5	254	160	230	28.6	7	51	101.6	150	4xØ19	13	13	20	24	6x4
		1-1/2"	28	305	180	300	31.8	7	73	124	180	4xØ22	16	16	26	30	6x5
		2"	35	368	220	355	38.4	7	92	165	215	8xØ19	20	20	30	28	7x4

FIND NO, QTY REQ NOMENCLATURE OR DESCRIPTION MATERIAL AND SPECIFICATION

LIST OF MATERIALS

FIG FH33A6XX--500

KING GATE METAL CORP.

DRAWN BY	吳賜柏 113,11,06	TITLE	900LB 1/2"~2" FORGED STAINLESS STEEL GLOBE VALVE O.S.&Y. BB. FLANGE ENDS
CHECKED BY		SCALE	NON
CHIF.	王聰烈 113,11,06	DRG NO.	85370035000XX
MANG.	賴金輝 113,11,06	Rev.0	
APPROVED	許進春 113,11,06		