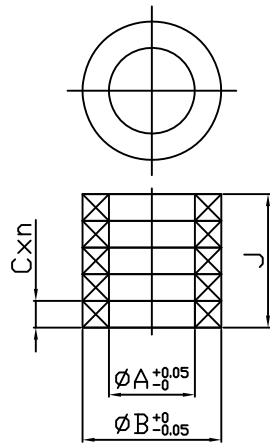
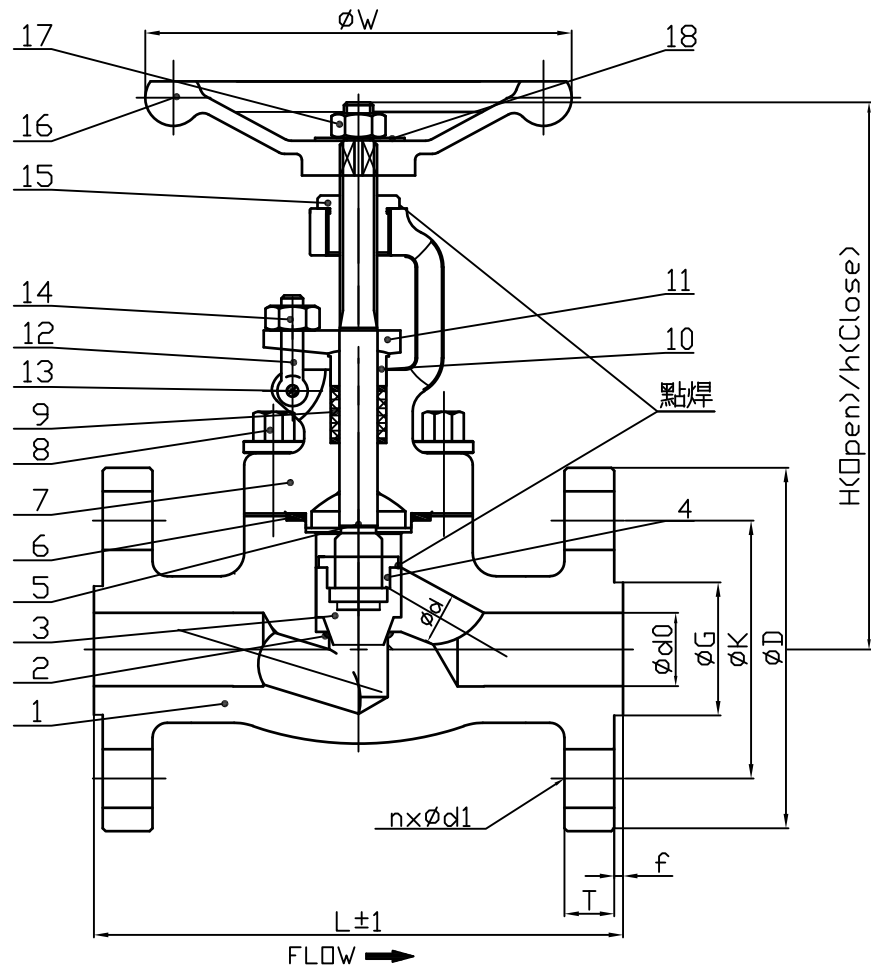


ORDER NO.:		TEST PRESSURE	SHELL		SEAT	STANDARD	FACE TO FACE(END TO END)	ASME B16.10 CLASS 150		REVISIONS				
TAG NO.:			HYDROSTATIC	450 psig	315 psig		DIMENSIONS OF ENDS	ASME B16.5 CLASS 150		ZONE	LTR	DESCRIPTION	DATE	APPROVED
			AIR		80 psig		WALL THICKNESS	API 602 CLASS 800						
		API 598 CLASS 150												



DETAIL OF PACKING
 ☒ - GRAPHITE

20		
19		
18	NAME PLATE	SS316
17	HANDWHEEL NUT	ASTM A194-2H
16	HANDWHEEL	ASTM A536
15	STEM NUT	ASTM A276-410+NITRIZES
14	EYE BOLT NUT	ASTM A194-2H
13	EYE BOLT PIN	ASTM A580-410T
12	EYE BOLT	ASTM A193-B7
11	GLAND FLANGE	ASTM A181
10	GLAND	ASTM A276-410
9	GLAND PACKING	GRAPHITE
8	BONNET BOLT	ASTM A193-B7
7	BONNET	ASTM A105
6	GASKET	SPW 304SS+GRAPHITE
5	STEM	ASTM A276-410
4	DISC NUT	ASTM A276-410
3	DISC	ASTM A276-410+STLT #6
2	SEAT	ASTM A276-410
1	BODY	ASTM A105

 SIZE-150
MARK

UNIT : mm


CLASS 150 DIMENSIONS

ITEM NO	QTY	SIZE	ød	L	øW	H	h	T	f	ød0	øG	øK	øD	nxød1	STEM		PACKING		
															øD	øA	øB	J	Cxn
		1/2"	10	108	100	165	156	9.7	1.6	15	35	60.5	90	4*ø16	11.5	11.5	17.5	24	6x4
		3/4"	13	117	100	167	158	10.5	1.6	20	43	70.0	100	4*ø16	11.5	11.5	17.5	24	6x4
		1"	17.5	127	125	204	190	11.2	1.6	25	51	79.3	110	4*ø16	13	13	20	24	6x4
		1-1/2"	28	165	160	231	214	14.3	1.6	40	73	98.6	127	4*ø16	16	16	26	30	6x5
		2"	36	203	180	267	247	15.8	1.6	50	92	120.6	152.4	4*ø19	20	20	30	28	7x4

FIND NO. QTY REQ NOMENCLATURE OR DESCRIPTION MATERIAL AND SPECIFICATION

LIST OF MATERIALS

FIG FN33A120-P000

 金口金屬股份有限公司

DRAWN BY	吳賜柏	113,10,29	TITLE: 150LB 1/2"~2" FORGED STEEL GLOBE VALVE O.S.&Y. B.B W/INTEGRAL FLANGE ENDS	
CHECKED BY				
CHIF.	王聰烈	113,10,29		
MANG.	賴金輝	113,10,29		
APPROVED	許進春	113,10,29		
SCALE	NON	DRG NO.	8132003520020	Rev.0