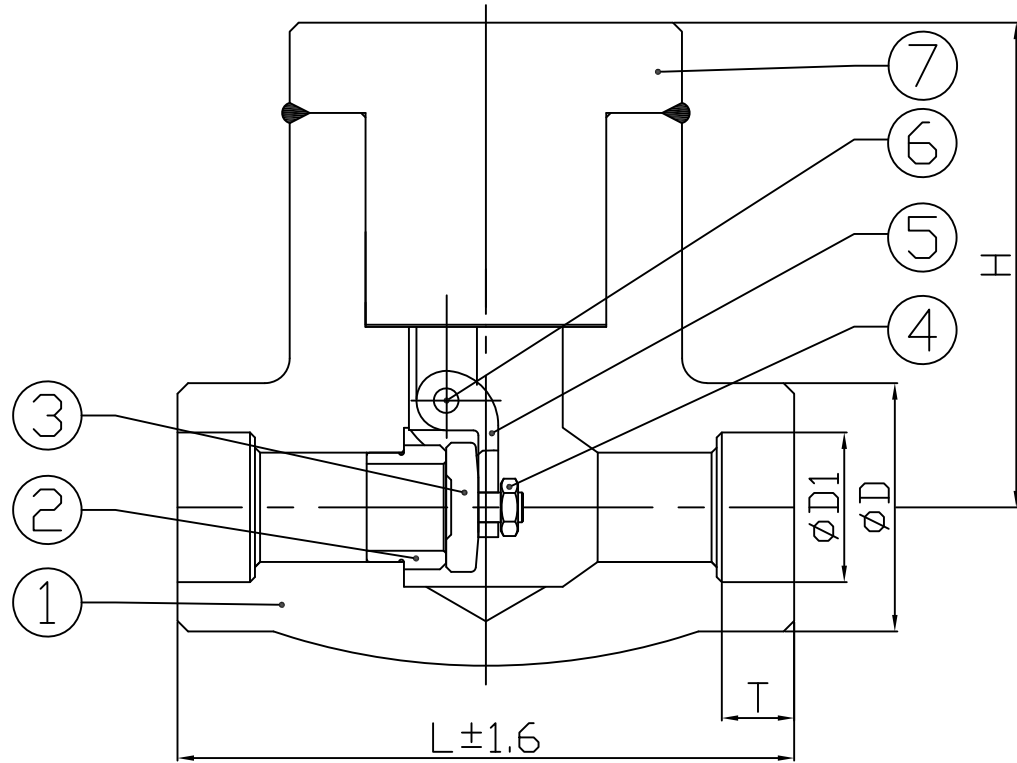


ORDER NO.		TEST PRESSURE		SHELL		SEAT		STANDARD		FACE TO FACE(END TO END)		KGMC STD		REVISIONS				
TAG NO.:		AIR		5,575 psig		4,080 psig		API 509 CLASS 1500		DIMENSIONS OF ENDS		ASME B16.11		ZONE	LTR	DESCRIPTION	DATE	APPROVED
										WALL THICKNESS		API 602 CLASS 1500						



SIZE-1500
MARK

UNIT : mm

CLASS 1500 DIMENSIONS

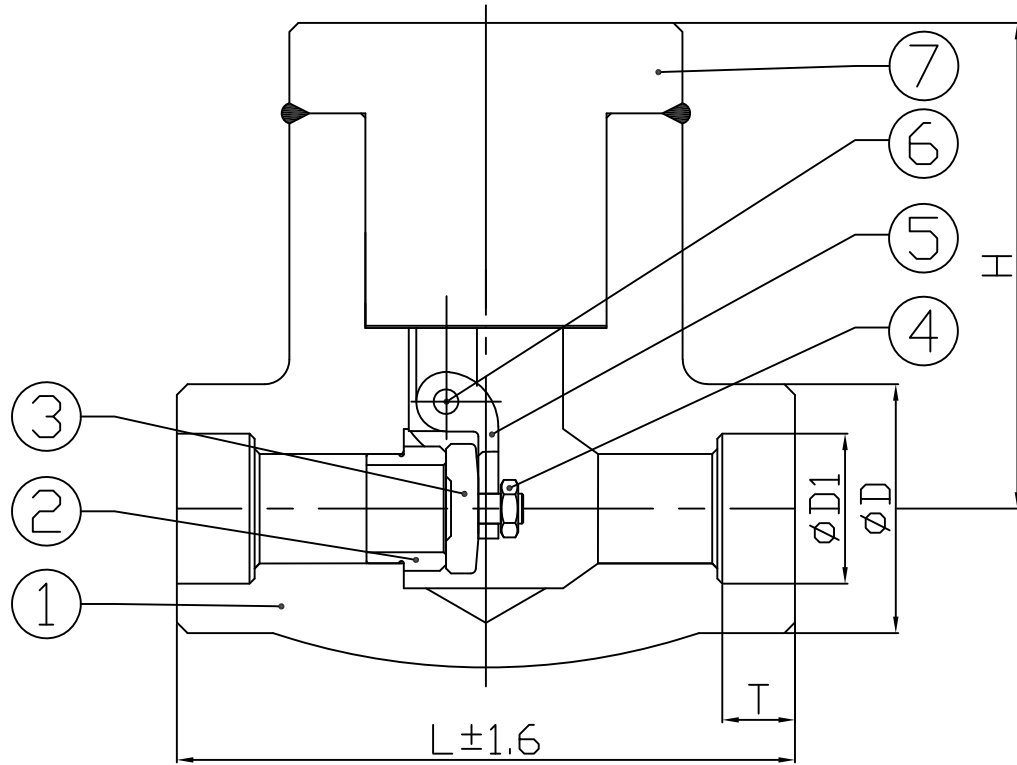
ITEM NO	QTY	SIZE	Ød	L	H	T	ØD1	ØD										
		1/2"	8	140	125	9.5	21.8	55										
		3/4"	9	140	125	12.5	27.2	55										
		1"	14	140	125	12.5	33.9	55										
		1-1/2"	25	178	163	12.5	48.8	85										
		2"	27	216	185	16.0	61.2	90										

20			
19			
18			
17			
16			
15			
14			
13			
12			
11			
10			
9			
8			
7	BONNET		ASTM A105
6	HINGE PIN		ASTM A105
5	ARM HINGE		ASTM A182-F304
4	NUT		ASTM A194-2H
3	DISC		ASTM A276-410
2	SEAT		ASTM A105+STLT #6
1	BODY		ASTM A105
FIND NO, QTY REQ	NOMENCLATURE OR DESCRIPTION	MATERIAL AND SPECIFICATION	

LIST OF MATERIALS

FIG	-E53A1XXSW010		
DRAWN BY	吳賜柏	113,09,19	TITLE: 1500LB 1/2"-2" FORGED STEEL SWING TYPE CHECK VALVE S.W ENDS
CHECKED BY			
CHIF.	王聰烈	113,09,19	
MANG.	賴金輝	113,09,19	
APPROVED	許進春	113,09,19	SCALE NON
	DRG NO.	81581050000XX	Rev.0

ORDER NO.		SHELL		SEAT		FACE TO FACE(END TO END)		KGMC STD		REVISIONS				
TAG NO.:		TEST PRESSURE	HYDROSTATIC 9,375 psig	6,875 psig	STANDARD	DIMENSIONS OF ENDS		ASME B16.11		ZONE	LTR	DESCRIPTION	DATE	APPROVED
		AIR	psig	80 psig		WALL THICKNESS		ASME B16.34 CLASS 1500						
		API 509 CLASS 2500												



SIZE-1500

MARK


UNIT : mm

CLASS 2500 DIMENSIONS

ITEM NO	QTY	SIZE	∅d	L	H	T	∅D1	∅D							
		1/2"	8	186	141	9.5	21.8	60							
		3/4"	9	186	141	12.5	27.2	60							
		1"	14	186	141	12.5	33.9	60							
		1-1/2"	25	232	185	12.5	48.8	90							
		2"	27	279	230	16.0	61.2	108							

20			
19			
18			
17			
16			
15			
14			
13			
12			
11			
10			
9			
8			
7	BONNET		ASTM A105
6	HINGE PIN		ASTM A105
5	ARM HINGE		ASTM A182-F304
4	NUT		ASTM A194-2H
3	DISC		ASTM A276-410
2	SEAT		ASTM A105+STLT #6
1	BODY		ASTM A105
FIND NO.	QTY REQ	NOMENCLATURE OR DESCRIPTION	MATERIAL AND SPECIFICATION

LIST OF MATERIALS

FIG	-G53A1XXSW010		
 金口金屬股份有限公司			
DRAWN BY	吳賜柏	113,09,19	TITLE:2500LB 1/2"-2" FORGED STEEL SWING TYPE CHECK VALVE S.W ENDS
CHECKED BY			
CHIF.	王聰烈	113,09,19	
MANG.	賴金輝	113,09,19	
APPROVED	許進春	113,09,19	SCALE NON
		DRG NO.	81591050000XX
			Rev.0